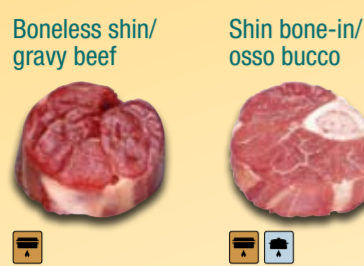
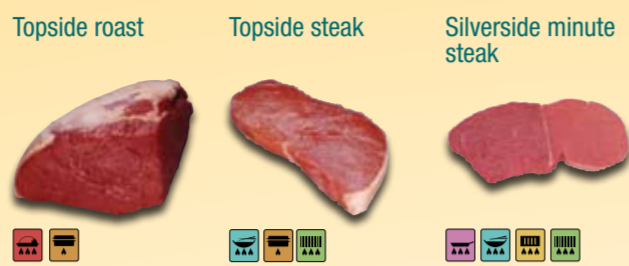


# Australian **beef** & **lamb** cuts

## 1 Shin



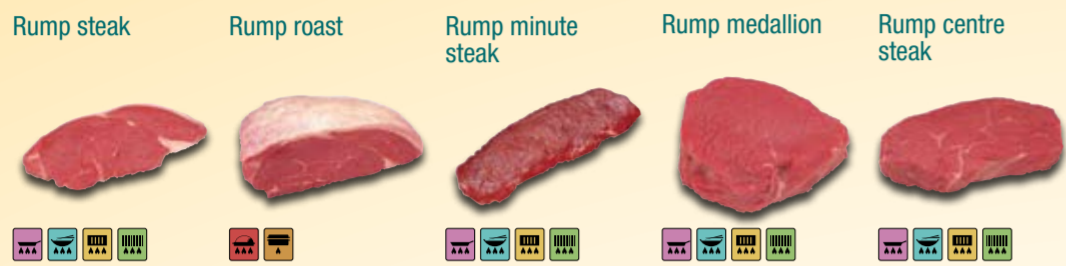
## 2 Silverside/Topside



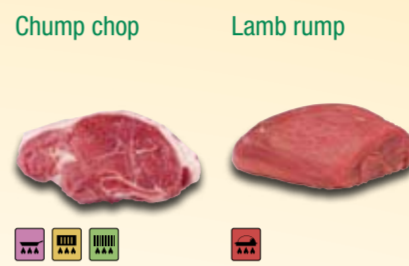
## 1 Leg



## 3 Rump



## 2 Chump



## 3 Tenderloin



## 4 Knuckle



## 4 Eye of Loin



## 5 Tenderloin



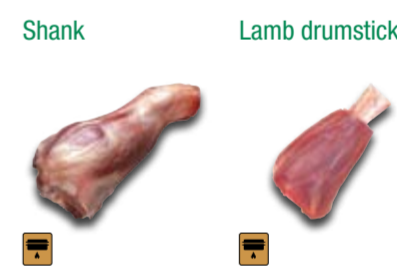
## 5 Loin



## 6 Skirt



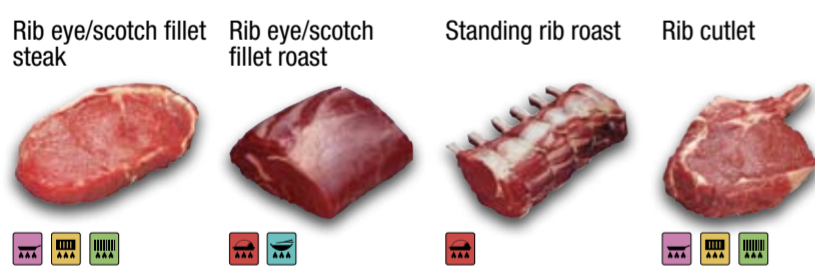
## 7 Shank



## 7 Striploin



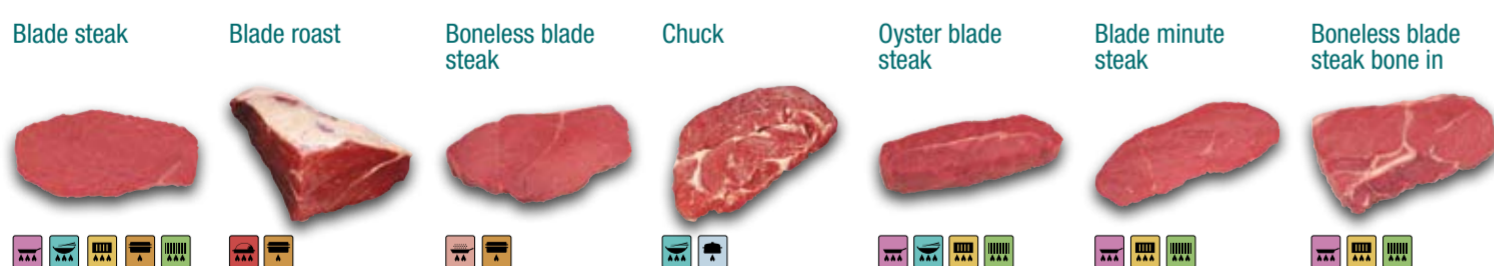
## 8 Cube Roll



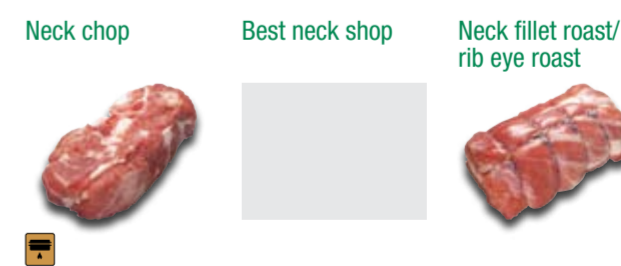
## 6 Forequarter



## 9 Blade/Chuck



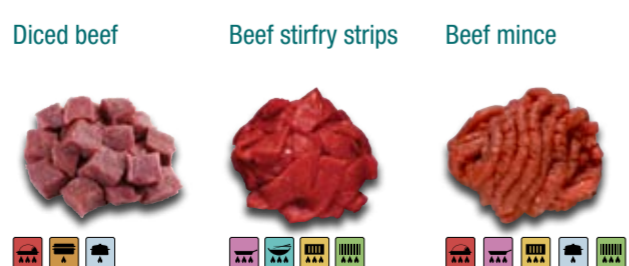
## 8 Neck



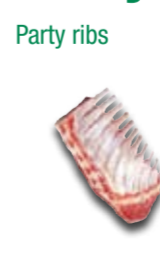
## 10 Brisket



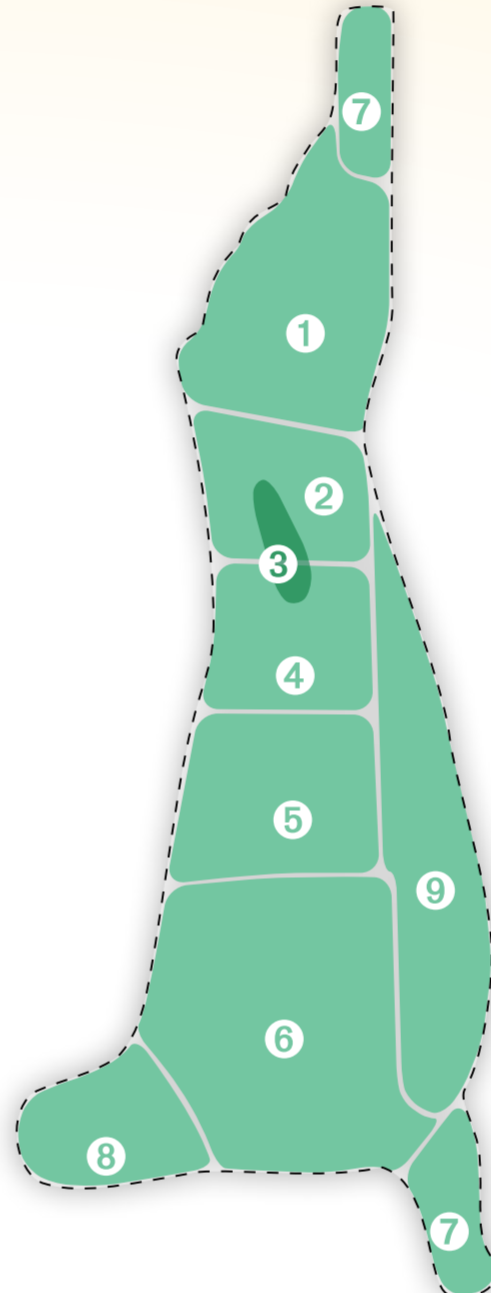
## 11 Other



## 9 Party Rack



## 10 Other



Legend

- OVEN ROAST
- PAN-FRY
- SHALLOW/ CRUMB-FRY
- STIR-FRY
- GRILL & CHAR-GRILL
- BRAISE & CASSEROLE
- SIMMER
- BARBECUE

